

Datasheet

HP EliteDesk 800 35W G2 Desktop Mini PC



Our biggest PC in our smallest package

Don't sacrifice size or power. Get the best of both worlds with the HP EliteDesk 800 35W Desktop Mini. With a full line of mounting, expansion, and security accessories¹ you can make the best enterprise-class solution for your workspace.



- Windows 10 Pro¹
- 6th Gen Intel® Core™ Processors²

Performance for the enterprise

- Power through your day with the performance you need in a PC driven by the latest 6th Gen Intel® Core™ processors² plus Intel® HD Graphics.

Security designed to deter downtime

- Get maximum uptime with HP BIOSphere³ with SureStart, which helps stop attacks at the BIOS, HP Client Security Suite's⁴ data protection, and multi-factor authentication.

Versatility to build a better workspace

- Deploy the Mini almost anywhere with the VESA-enabled flexible mounting options including optional accessories, and VESA ready displays. Customize your solution with a full range of expandability, security, and mounting accessories.⁵

Ready to run

- This Mini endured 120,000 hours of performance trials during the HP Total Test Process and is designed to undergo MIL-STD 810G testing.⁶ Help keep your PC cool in challenging work environments with HP temperature controls.

Featuring

- Help protect from today's security threats and maximize management and productivity features for business with Windows 10 Pro.¹
- Available ENERGY STAR® certified and EPEAT® Gold⁷ registered models of the HP EliteDesk 800 Desktop Mini. Consume less than 8W of power at idle.
- Simplify IT manageability with Intel® vPro™⁸ and Windows 10 Pro¹ plus HP Common Core BIOS, which enables easy management of your entire fleet of HP devices.
- Get the same HP configuration across the globe for your international enterprise, available in more than 180 countries where HP conducts business.
- Attach your HP Desktop Mini directly behind select HP Elite Displays.⁹
- Increase storage and performance with an optional powerful HP Turbo Drive¹⁰ that handles your growing and complex workloads.
- Take advantage of HP's Elite Support,¹² limited warranty, and Global Series support.

HP EliteDesk 800 35W G2 Desktop Mini PC Specifications Table



Form Factor	Mini
Available Operating System	Windows 10 Pro 64 ¹ Windows 10 Home 64 ¹ Windows 8.1 Pro 64 ¹ Windows 8.1 64 ¹ Windows 7 Professional 64 (available through downgrade rights from Windows 10 Pro) ² Windows 7 Professional 32 (available through downgrade rights from Windows 10 Pro) ² Windows 7 Professional 64 ¹ Windows 7 Professional 32 ¹ SUSE Linux Enterprise Desktop 11 FreeDOS 2.0
Available Processors⁴	Intel® Core™ i7-6700T with Intel HD Graphics 530 (2.8 GHz, up to 3.6 GHz with Intel Turbo Boost, 8 MB cache, 4 cores); Intel® Core™ i5-6600T with Intel HD Graphics 530 (2.7 GHz, up to 3.5 GHz with Intel Turbo Boost, 6 MB cache, 4 cores); Intel® Core™ i5-6500T with Intel HD Graphics 530 (2.5 GHz, up to 3.1 GHz with Intel Turbo Boost, 6 MB cache, 4 cores); Intel® Core™ i3-6300T with Intel HD Graphics 530 (3.3 GHz, 4 MB cache, 2 cores); Intel® Core™ i3-6100T with Intel HD Graphics 530 (3.2 GHz, 3 MB cache, 2 cores); Intel® Pentium® G4400T with Intel HD Graphics 510 (2.9 GHz, 3 MB cache, 2 cores)
Chipset	Intel® Q170
Maximum Memory	Up to 32 GB DDR4-2133 SDRAM Standard memory note: Transfer rates up to 2133 MT/s
Memory slots	2 SODIMM
Internal Storage	128 GB up to 256 GB Turbo Drive G2 M.2 SSD ⁵ 120 GB up to 512 GB SATA SSD ⁶ 120 GB up to 256 GB SATA SE SSD ⁶ 500 GB up to 1 TB SATA SSHD ⁶ 500 GB up to 1 TB SATA (7200 rpm) ⁶ up to 2 TB SATA (5400 rpm) ⁶
Available Graphics	Integrated: Intel® HD Graphics ⁸ (Integrated graphics will depend on processor)
Audio	DTS Studio Sound™ audio management technology, HD audio with Realtek ALC221 codec (all ports are stereo), microphone and headphone front ports (3.5 mm), audio line-out rear port (3.5 mm), multi-streaming capable, internal speaker
Communications	LAN: Intel® i219M GbE WLAN: Intel® 3165 802.11ac wireless M.2 with Bluetooth®; Intel® 3165 802.11ac wireless M.2; Intel® 7265 802.11ac wireless M.2 with Bluetooth®; Intel® 7265 802.11ac wireless M.2; Intel® 7265 802.11n wireless M.2 with Bluetooth®; Intel® 7265 802.11n wireless M.2; Intel® 7265 802.11n wireless PCIe; Broadcom BCM943228Z 802.11n wireless M.2 with Bluetooth®; Broadcom BCM943228Z 802.11n wireless M.2 ⁷
Expansion Slots	2 M.2
Ports and Connectors	Front: 2 USB 3.0; 1 USB Type-C™; 1 headphone/microphone combo Back: 4 USB 3.0; 1 RJ-45; 1 VGA; 1 serial (optional); 1 HDMI (optional); 2 DisplayPort (1 optional) (If serial or HDMI is selected, then only 1 Display Port remains available.)
Internal Drive Bays	One 6,35 cm (2.5"); One M.2
Input Device	HP PS/2 Keyboard; HP USB Keyboard; HP USB Smart Card (CCID) Keyboard; HP USB and PS/2 Washable Keyboard; HP Wireless Keyboard and Mouse combo; HP USB Antimicrobial Keyboard; HP USB Conferencing Keyboard; HP USB Business Slim Keyboard; HP Wireless Business Slim Keyboard ⁹ HP PS/2 Mouse; HP USB Mouse; HP USB 1000 dpi Laser Mouse; HP USB and PS/2 Washable Mouse; HP USB Antimicrobial Mouse; HP USB Grey Mouse; HP USB Hardened Mouse ⁹
Available Software	HP business PCs are shipped with a variety of software titles including HP ePrint Driver, HP PageLift, HP Support Assistant, and HP Recovery Disk Creator. Please refer to this product's quick spec document for a full list of preinstalled software. ^{10,14}
Security Management	HP BIOSphere with Sure Start; HP Active Health; Infineon TPM SLB9670 1.2/2.0; Hood sensor; Security Loop; Ultrastim cable lock (optional) ^{11,15}
Power	65 W 89% efficient (external)
Dimensions	6.9 x 7 x 1.3 in 175 x 34 x 177 mm
Weight	2.9 lb 1.3 kg (Configured with 1 hard drive. Exact weight depends on configuration.)
Environmental	Low halogen
Energy Efficiency Compliance	ENERGY STAR® certified and EPEAT® registered configurations available ¹²
Warranty	3-year limited warranty including 3 years of parts, labour, and next-business-day onsite service. Terms and conditions vary by country. Certain restrictions and exclusions apply.

HP EliteDesk 800 35W G2 Desktop Mini PC

Accessories and services (not included)



HP Integrated Work Center Stand for Ultra Slim Desktop and Thin Client

E8H16AA

The HP Integrated Work Center Stand is designed to help maximize the use of limited desk space without compromising performance or productivity by accommodating an HP Thin Client and most HP 17 to 24-inch¹ (43.18 to 60.96 cm) diagonal LCD monitors (please refer to compatibility in the Quick Spec) with VESA standard mounting brackets..



HP Quick Release

EM870AA

A secure and easy-to-use mounting solution for your VESA-compliant HP thin clients, compatible HP flat panel monitors and other HP desktop products. Attach to any a compatible stand, bracket or wall mount and make the most of your workspace.



HP Desktop Mini Rack Mount Tray Kit Module

G1K21AA

Put your HP Desktop Mini PCs to work behind the scenes with HP Desktop Mini Rack Mount Tray Kit Modules, which holds up to eight PCs and fit into the HP 100kg Sliding Shelf.¹



HP Desktop Mini Security/Dual VESA Sleeve

G1K22AA

Wrap your HP Desktop Mini PC in the HP Desktop Mini Security/Dual VESA Sleeve to securely mount your PC behind your display, position your solution on a wall, and lock it down with the optional HP Ultra-Slim Cable Lock.



HP Desktop Mini Chassis Tower Stand

G1K23AA

Keep it vertical. Make the most of space-constrained environments by deploying your HP Desktop Mini in a vertical orientation with the HP Desktop Mini Chassis Tower Stand.



HP Integrated Work Center for Desktop Mini and Thin Client

G1V61AA

Make the most of small work spaces with an HP IWC Desktop Mini/Thin Client that lets you create a compact desktop solution by combining a display¹ with an HP Desktop Mini, HP Thin Client or HP Chromebox¹ and giving you convenient front access to all of its inputs.



HP USB to Serial Port Adapter

J7B60AA

Quickly and easily add a serial port to your desktop to connect to your serial and parallel peripherals with the HP USB Serial Port Adapter, which plugs into any USB port on your PC.



HP Desktop Mini 500GB Hard Drive I/O Module

K9Q82AA

Add an extra hard drive to your HP Desktop Mini PC and enable compatibility with your existing and legacy peripherals with the HP Desktop Mini 500GB HDD/I/O Module.



HP Desktop Mini DVD Super Multi-Writer ODD Module

K9Q83AA

Add a DVD Super-Multi Writer to your HP Desktop Mini PC with HP Desktop Mini DVD Super Multi-Writer ODD Module.¹



HP Desktop Mini I/O Module

K9Q84AA

Keep working with your existing peripherals and add legacy ports to your HP Desktop Mini PC with the HP Desktop Mini I/O Module.



HP Desktop Mini 65w Power Supply Kit

L2X04AA

Keep an extra HP Desktop Mini adapter at the ready, or take it with you if you use your HP Desktop Mini on the go with the HP Desktop 65W Mini Power Supply Kit.¹



HP 3D 256GB SATA Solid State Drive

N1M49AA

Expand the storage capabilities of your desktop with the HP 3D 256 GB SATA SSD¹, which includes 3D V-NAND flash for impressive read/write performance and reliability plus the same solid performance you already get from current from SSD drives.



HP 5 year Next business day Onsite Desktop Only Hardware Support

U7899E

Learn more at

www.hp.eu/desktops



HP Wireless Slim Business Keyboard

N3R88AA

Enjoy easy data entry and wireless connectivity with the HP Wireless Business Slim Keyboard, designed to complement the 2015 class of HP Business PCs.



HP 16GB SODIMM DDR4 Memory

P1N55AA

Boost the capabilities of your HP Business Desktop PC and improve system performance and application responsiveness with low-power, high-speed DDR4 memory from HP.



HP Desktop Mini LockBox

P1N78AA

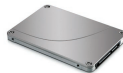
Fortify your HP Desktop Mini in a range of settings with the HP Desktop Mini LockBox, HP's most secure enclosure for your PC, power brick, and cable connections.



HP Desktop Mini Port Cover Kit

P3R65AA

Help prevent unauthorized access to the rear ports of your HP Desktop Mini with HP Desktop Mini Port Cover Kit.



HP 128 GB SATA 6 Solid State Drive

QV063AA

Boost the performance and robustness of your HP Business Desktop PC with an HP Solid State Drive. The HP Solid State Drives are a drop-in replacement for the 2.5-inch or 3.5-inch (with bracket) hard disk drive of some HP Compaq Business Desktop PCs providing many performance and durability improvements over traditional Hard Disk Drive (HDD) technology.

HP EliteDesk 800 35W G2 Desktop Mini PC

Messaging Footnotes

- ¹ Not all features are available in all editions or versions of Windows. Systems may require upgraded and/or separately purchased hardware, drivers, software or BIOS update to take full advantage of Windows functionality. Windows 10 is automatically updated, which is always enabled. ISP fees may apply and additional requirements may apply over time for updates. See <http://www.microsoft.com>.
- ² Multi-Core is designed to improve performance of certain software products. Not all customers or software applications will necessarily benefit from use of this technology. 64-bit computing system required. Performance and clock frequency will vary depending on application workload and your hardware and software configurations. Intel's numbering is not a measurement of higher performance.
- ³ HP BIOSphere features may vary depending on the PC platform & configuration.
- ⁴ Requires Windows.
- ⁵ Mounting hardware required and sold separately.
- ⁶ MIL-STD testing is pending and is not intended to demonstrate fitness for U.S. Department of Defense contract requirements or for military use. Test results are not a guarantee of future performance under these test conditions. Accidental damage or damage under the MIL STD test conditions requires an optional HP Accidental Damage Protection Care Pack.
- ⁷ EPEAT® Gold registered where applicable. EPEAT registration varies by country. See www.epeat.net for registration status by country.
- ⁸ Some functionality of vPro, such as Intel® Active Management Technology and Intel Virtualization Technology, requires additional third party software in order to run. Availability of future "virtual appliances" applications for Intel vPro technology is dependent on third party software providers. Microsoft Windows required.
- ⁹ Displays sold separately, mounting requires HP PC Mounting Bracket for Monitors, sold separately. See product QuickSpecs for exact PC compatibility.
- ¹⁰ Sold separately or as an optional feature.
- ¹² Elite support only available in the US and Canada in English.

Technical specifications disclaimers

- ¹ Not all features are available in all editions or versions of Windows. Systems may require upgraded and/or separately purchased hardware, drivers, software or BIOS update to take full advantage of Windows functionality. Windows 10 is automatically updated, which is always enabled. ISP fees may apply and additional requirements may apply over time for updates. See <http://www.microsoft.com>.
- ² This system is preinstalled with Windows 7 Professional software and also comes with a license and media for Windows 10 Pro software. You may only use one version of the Windows software at a time. Switching between versions will require you to uninstall one version and install the other version. You must back up all data (files, photos, etc.) before uninstalling and installing operating systems to avoid loss of your data.
- ³ This system is preinstalled with Windows 7 Professional software and also comes with a license and media for Windows 8.1 Pro software. You may only use one version of the Windows software at a time. Switching between versions will require you to uninstall one version and install the other version. You must back up all data (files, photos, etc.) before uninstalling and installing operating systems to avoid loss of your data.
- ⁴ Multi-Core is designed to improve performance of certain software products. Not all customers or software applications will necessarily benefit from use of this technology. 64-bit computing system required. Performance will vary depending on your hardware and software configurations. Intel's numbering is not a measurement of higher performance.
- ⁵ For storage drives, GB = 1 billion bytes. TB = 1 trillion bytes. Actual formatted capacity is less. Up to 16 GB (for Windows 7) and up to 36 GB (for Windows 8.1 and 10) of system disk is reserved for system recovery software.
- ⁷ Wireless cards are optional or add-on features and requires separately purchased wireless access point and internet service. Availability of public wireless access points limited.
- ⁸ HD content required to view HD images.
- ⁹ Optional or add-on feature.
- ¹⁰ HP ePrint requires an Internet connection to HP web-enabled printer and HP ePrint account registration (for a list of eligible printers, supported documents and image types and other HP ePrint details, see www.hp.com/go/businessmobileprinting).
- ¹¹ HP BIOSphere with Sure Start available only on business PCs with HP BIOS.
- ¹² EPEAT® registered where applicable. EPEAT registration varies by country. See www.epeat.net for registration status by country.
- ¹³ External power supplies, power cords, cables and peripherals are not low halogen. Service parts obtained after purchase may not be low halogen.
- ¹⁴ HP PageLift requires Windows 7 or higher.
- ¹⁵ Firmware TPM is version 2.0. Hardware TPM is v1.2, which is a subset of the TPM 2.0 specification version v0.89 as implemented by Intel Platform Trust Technology (PTT).

Learn more at
www.hp.eu/desktops

Engage HP Financial Services

Explore monthly payment options and technology refresh plans that can provide more flexibility to help you meet your IT goals. More information on www.hp.com/go/hpfs.

Sign up for updates
www.hp.com/go/getupdated

© Copyright 2015 HP Development Company, L.P. The information contained herein is subject to change without notice. The only warranties for HP products and services are set forth in the express warranty statements accompanying such products and services. Nothing herein should be construed as constituting an additional warranty. HP shall not be liable for technical or editorial errors or omissions contained herein.

ENERGY STAR and the ENERGY STAR mark are registered trademarks owned by the U.S. Environmental Protection Agency. Bluetooth is a trademark of its proprietor used by Hewlett-Packard Company under license. Microsoft and Windows are U.S. trademarks of the Microsoft group of companies. Intel and Core are trademarks of Intel Corporation in the U.S. and other countries. Linux® is the registered trademark of Linus Torvalds in the U.S. and other countries. For DTS patents, see <http://patents.dts.com>. Manufactured under license from DTS Licensing Limited. DTS, the Symbol, & DTS and the Symbol together are registered trademarks, and DTS Studio Sound is a trademark of DTS, Inc. © DTS, Inc. All Rights Reserved. All other trademarks are the property of their respective owners.

